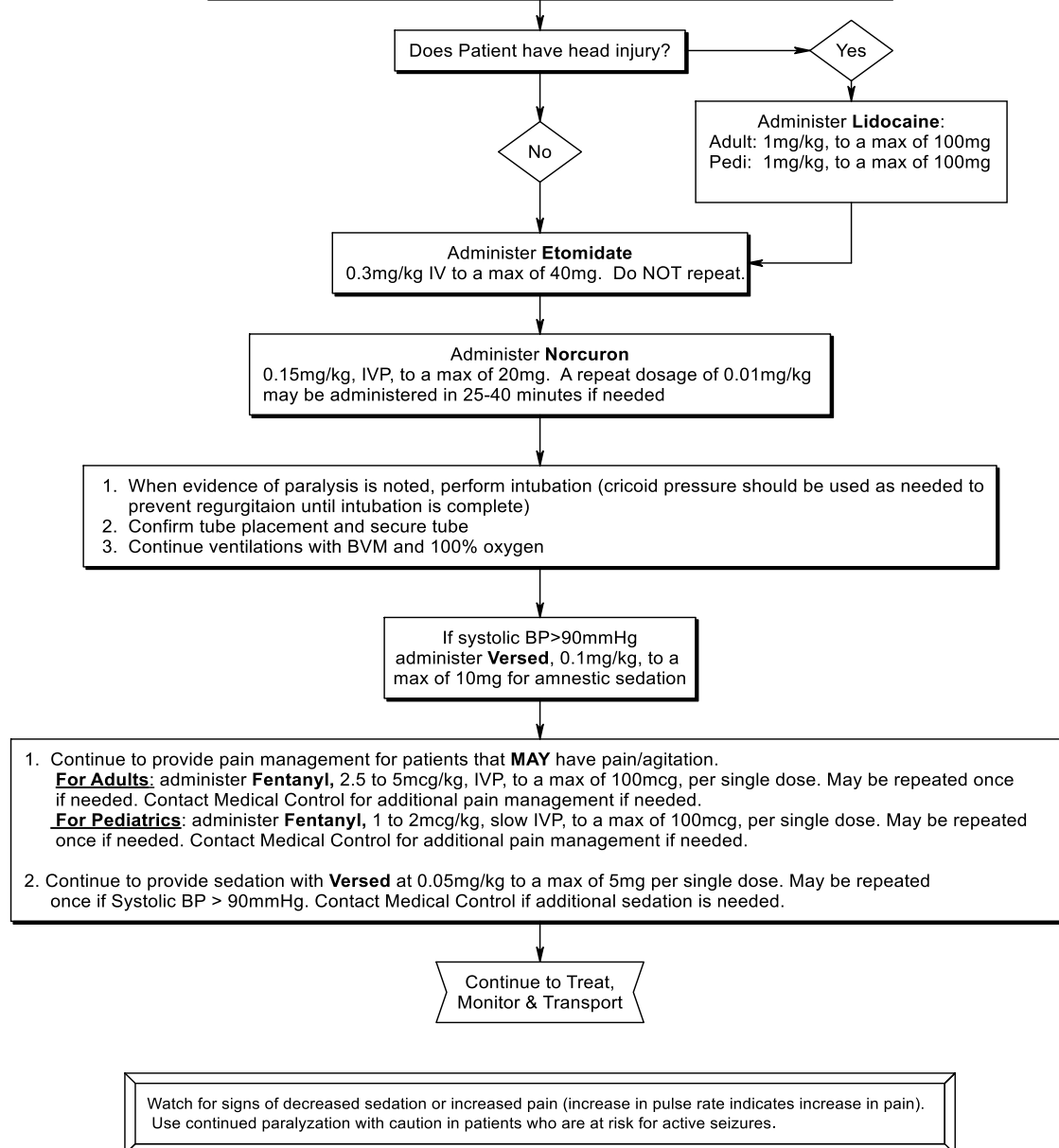


USE OF PHARMACOLOGIC AGENTS TO FACILITATE INTUBATION USING NORCURON

1. Assist Ventilation with BVM and 100% **Oxygen**
2. Make sure patient is well oxygenated BEFORE administration of medication.
3. Assure patency of IV lines
4. Monitor EKG

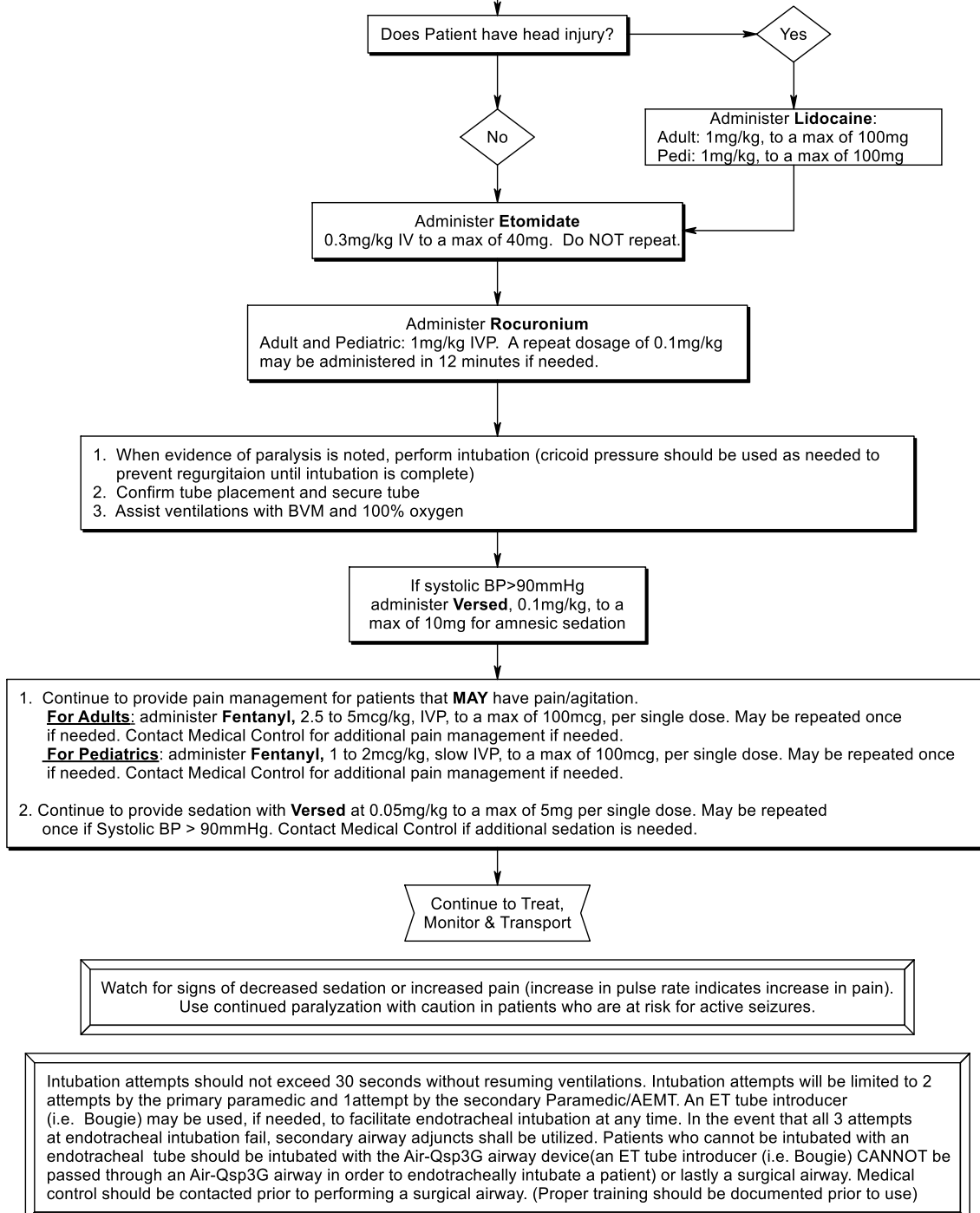


Intubation attempts should not exceed 30 seconds without resuming ventilations. Intubation attempts will be limited to 2 attempts by the primary paramedic and 1 attempt by the secondary Paramedic/AEMT. An ET tube introducer (i.e. Bougie) may be used, if needed, to facilitate endotracheal intubation at any time. In the event that all 3 attempts at endotracheal intubation fail, secondary airway adjuncts shall be utilized. Patients who cannot be intubated with an endotracheal tube should be intubated with the Air-Qsp3G airway device (an ET tube introducer (i.e. Bougie) CANNOT be passed through an Air-Qsp3G airway in order to endotracheally intubate a patient) or lastly a surgical airway. Medical control should be contacted prior to performing a surgical airway. (Proper training should be documented prior to use)

USE OF PHARMACOLOGIC AGENTS TO FACILITATE INTUBATION USING ROCURONIUM*

*Preferred Paralytic for Pediatrics

1. Assist Ventilations with BVM and 100% Oxygen
2. Make sure patient is well oxygenated BEFORE administration of medication.
3. Assure patency of IV lines
4. Monitor EKG



USE OF PHARMACOLOGIC AGENTS TO FACILITATE INTUBATION USING SUCCINYLCHOLINE

